

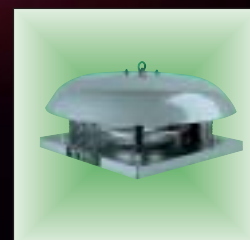
NEW

# ROOF FANS

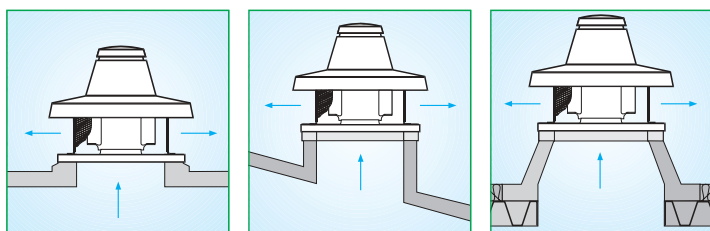
ROOF MOUNTED CENTRIFUGAL  
EXTRACTOR FANS - MODELS FOR HOT FUMES  
EXTRACTION



VENTILATION  
AIR CONDITIONING  
AIR PURIFICATION  
HEATING



# TORRETTE TR-ED RANGE HOT FUMES ROOF FANS



- Delivery: up to 13,500 m<sup>3</sup>/h
- Operating temperature: from -25°C to + 90°C under continuous operation. Engineered for 2 hours continuous operation with fumes at 400°C.
- Motor insulation class H with IP55.
- Asynchronous induction motor, standard UNELMEC B5 size, ball bearing mounted rotor.
- Galvanised steel sheet fan with self-cleaning, backward curved blades, self-ventilating, die cast aluminium hub, clockwise rotation (intake view).
- Painted anti-touch steel ring protection grille.
- Certified by TUV according to EN 12101-3 (at max speed). Certification numbers:
  - TRM models: 0036 CPD RG03 01
  - TRT models : 0036 CPD RG03 02
- Streamlined cross-section intake port, made of sheet steel and finished in protective polyester paint.
- For long term safety each unit has a safety cable to anchor it to the base.
- Single phase models can be controlled by an optional speed controller. Three phase models have two speeds which can be selected with an optional speed switch.
- Sound power and pressure levels conforming to ISO 3744.



**NEW**

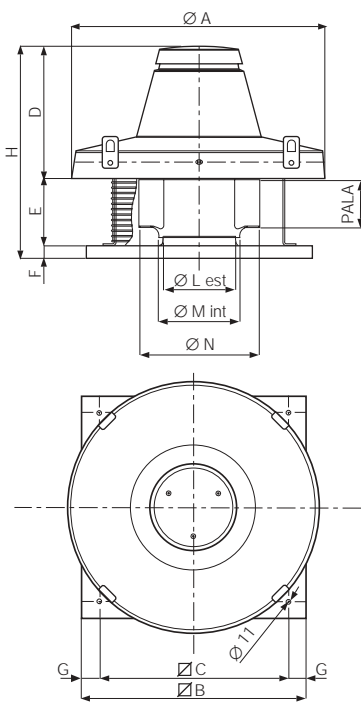


*Easily installed on all types of roof. For extracting low dust, acid-free and non-corrosive air only. Maximum air temperature for continuous operation is 90°C. Not suitable for installation in ducts located directly above fireplaces or burners.*

Model	Code	V ~ 50 Hz	W	A	Poles	Rpm	Delivery		Max P		Noise dB(A) (3 m)*	Kg	Insulation	Motor IP	Max °C
							m <sup>3</sup> /h*	l/s*	mm H <sub>2</sub> O*	Pa*					
TRM 10 ED 4P	15039	220/240	110/110	0,46/0,46	4	1395	1000	278	20	196	56	18,5	cl. I	55	90 (continuous operation)
TRM 15 ED 4P	15041	220/240	130/140	0,59/0,58	4	1315	1400	389	24	235	58,5	19	cl. I	55	
TRM 20 ED 4P	15043	220/240	260/270	1,21/1,18	4	1375	2200	611	34	334	59	33	cl. I	55	
TRM 30 ED 4P	15046	220/240	400/420	1,87/1,78	4	1285	3100	861	40	392	67	35	cl. I	55	
TRM 50 ED 4P	15048	220/240	700/720	3,30/3,10	4	1288	4500	1250	52	510	72,5	40	cl. I	55	
TRM 70 ED 4P	15080	220/240	1000/1200	4,5/4,3	4	1415	5800	1611	65	638	77	80	cl. I	55	
TRT 10 ED 4P	15040	380/415	95/100	0,23/0,24	4	1400	1100 890	306 247	21 17	206 167	56	18,5	cl. I	55	
TRT 15 ED 4P	15042	380/415	120/130	0,26/0,27	4	1345	1400 1100	384 306	24 16	235 157	58,5	19	cl. I	55	
TRT 20 ED 4P	15045	380/415	260/270	0,52/0,53	4	1384	2200 1800	611 500	34 24	334 235	59	33	cl. I	55	
TRT 30 ED 4P	15047	380/415	400/420	0,75/0,75	4	1355	3100 2555	861 710	43 30	422 294	67	35	cl. I	55	
TRT 50 ED 4P	15049	380/415	670/690	1,22/1,21	4	1380	4500 3800	1250 1056	52 38	510 373	72,5	40	cl. I	55	
TRT 70 ED 4P	15081	380/415	1040/1090	2,0/2,0	4	1440	6000 5300	1667 1472	67 52	657 510	77	78	cl. I	55	
TRT 70 ED 6P	15082	380/415	580/600	1,3/1,3	6	950	6000 5300	1667 1472	38 30	373 294	74	81	cl. I	55	
TRT 100 ED 4P	15083	380/415	1860/1950	4,2/4,9	4	1420	9100 8300	2528 2306	84 72	824 706	84	81,5	cl. I	55	
TRT 100 ED 6P	15084	380/415	1090/1130	2,3/2,4	6	950	8600 7550	2389 2097	47 38	461 373	77	114	cl. I	55	
TRT 100 ED 8P	15085	380/415	820/860	1,9/2,0	8	715	9200 8200	2556 2278	34 28	334 275	71	124	cl. I	55	
TRT 150 ED 6P	15086	380/415	1850/1930	3,5/3,4	6	930	12800 11000	3556 3056	59 42	579 412	80	125	cl. I	55	
TRT 150 ED 8P	15087	380/415	1470/1510	3,0/3,0	8	715	13500 11600	3750 3222	42 34	412 334	74	129	cl. I	55	

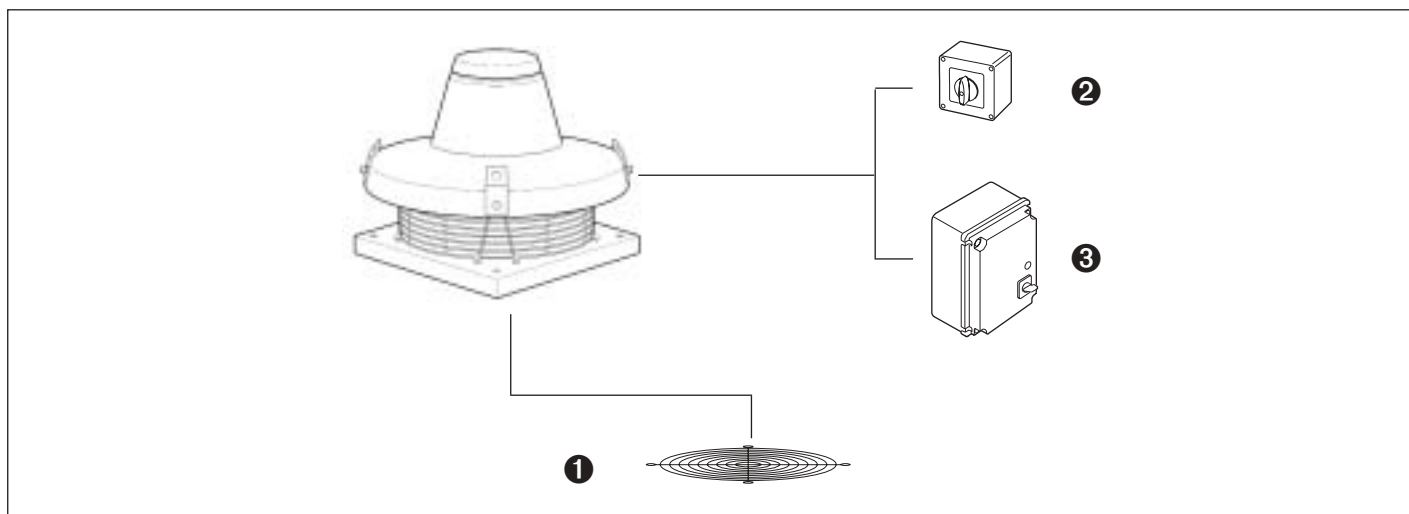
\* At max speed.

Dimensions (mm)



	Impeller	Ø A	Ø B	Ø C	D	E	F	G	H	Ø L	Ø M	Ø N	Blade	kg
<b>TRM 10 ED 4P</b>	280x101,5	600	410	357	309	166	38	26,5	513	183	187,5	280	101,5	18,5
<b>TRT 10 ED 4P</b>	280x101,5	600	410	357	309	166	38	26,5	513	183	187,5	280	101,5	18,5
<b>TRM 15 ED 4P</b>	315x101,5	600	410	357	309	166	38	26,5	513	206	211	315	101,5	19
<b>TRT 15 ED 4P</b>	315x101,5	600	410	357	309	166	38	26,5	513	206	211	315	101,5	19
<b>TRM 20 ED 4P</b>	355x125	780	550	500	397	226	38	25	661	231	236,5	355	125	33
<b>TRT 20 ED 4P</b>	355x125	780	550	500	397	226	38	25	661	231	236,5	355	125	33
<b>TRM 30 ED 4P</b>	400x140	780	550	500	397	226	38	25	661	260	265,5	400	140	35
<b>TRT 30 ED 4P</b>	400x140	780	550	500	397	226	38	25	661	260	265,5	400	140	35
<b>TRM 50 ED 4P</b>	450x160	780	550	500	397	243	38	25	678	292	298	450	160	40
<b>TRT 50 ED 4P</b>	450x160	780	550	500	397	243	38	25	678	292	298	450	160	40
<b>TRM 70 ED 4P</b>	500x160	1015	830	750	449	283	38	40	770	328	335	504	160	80
<b>TRT 70 ED 4P</b>	500x160	1015	830	750	449	283	38	40	770	328	335	504	160	78
<b>TRT 70 ED 6P</b>	560x180	1015	830	750	449	283	38	40	770	365	375	562	180	81
<b>TRT 100 ED 4P</b>	560x180	1015	830	750	449	283	38	40	770	365	375	562	180	81,5
<b>TRT 100 ED 6P</b>	630x224	1165	980	900	605	383	38	40	1026	415	421	635	224	114
<b>TRT 100 ED 8P</b>	710x224	1165	980	900	605	383	38	40	1026	415	472	715	224	124
<b>TRT 150 ED 6P</b>	710x250	1165	980	900	605	383	38	40	1026	465	472	715	250	125
<b>TRT 150 ED 8P</b>	800x250	1165	980	900	605	383	38	40	1026	520	529	805	250	129

Accessories



Model	Code	Product
TR-ED-G 10/15 (protective grille)	22700	15039-15041-15040-15042
<b>1</b> TR-ED-G 20/30/50 (protective grille)	22710	15043-15046-15048-15045-15047-15049
TR-G 70/100 (protective grille)	22506	15080-15081-15082-15083
TR-G 100/150-6P/8P (protective grille)	22507	15084-15085-15086-15087
<b>2</b> TR-CVT (three phase speed controller)	22910	For all TRT models*
IRM 30 (single phase speed controller)	12921	15039*-15041*
IRM 40 (single phase speed controller)	12922	15043*-15046*
IRM 50 (single phase speed controller)	12928	15048*-15080*
<b>3</b> IRT 15 (three phase speed controller)	12923	15040*-15042*-15045*
IRT 35 (three phase speed controller)	12924	15047*-15049*-15081*-15082*-15084*-15085*
IRT 40 (three phase speed controller)	12927	15083*-15086*-15087*

\* Not allowed for hot fumes extraction

## Pressure/performance curves

