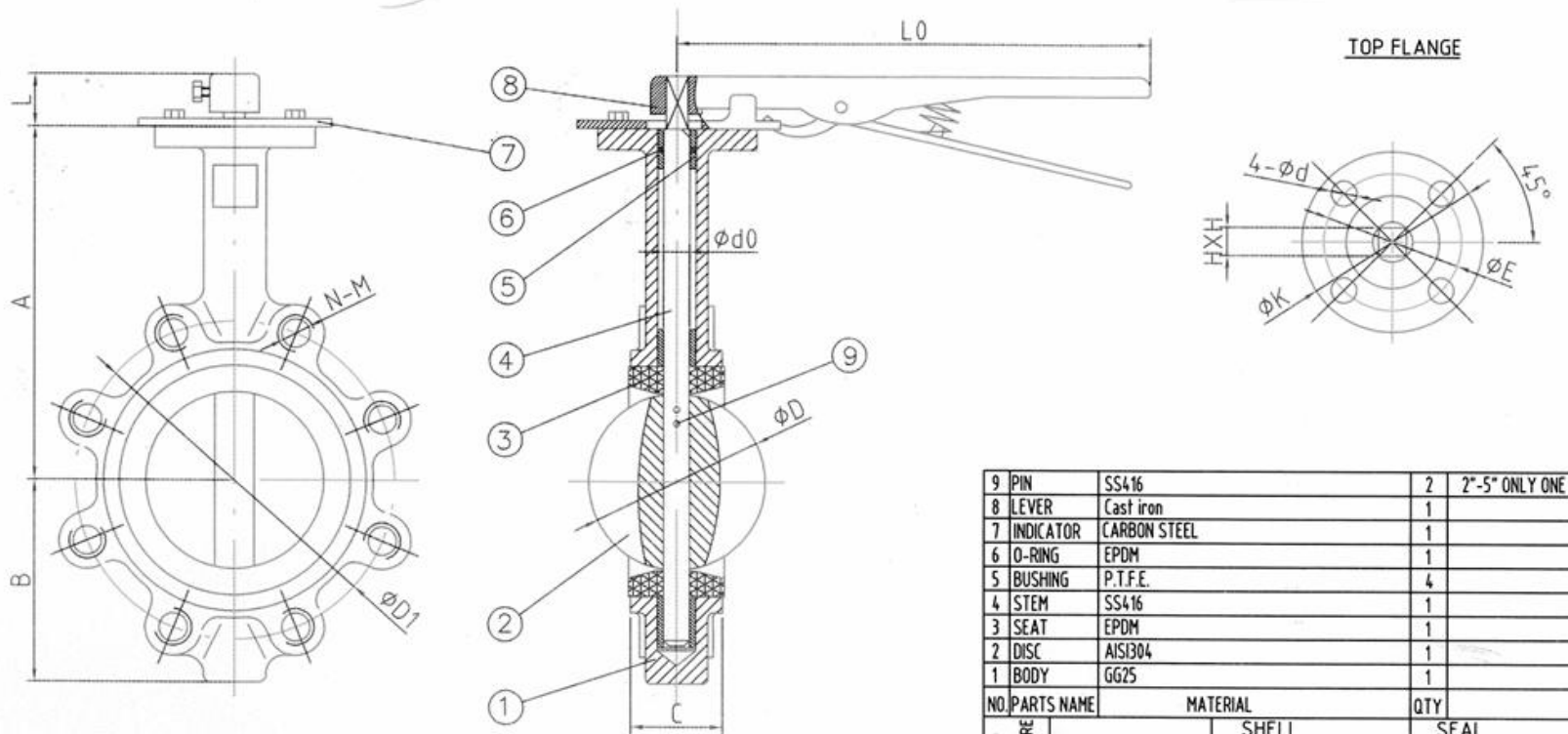


PT. 3

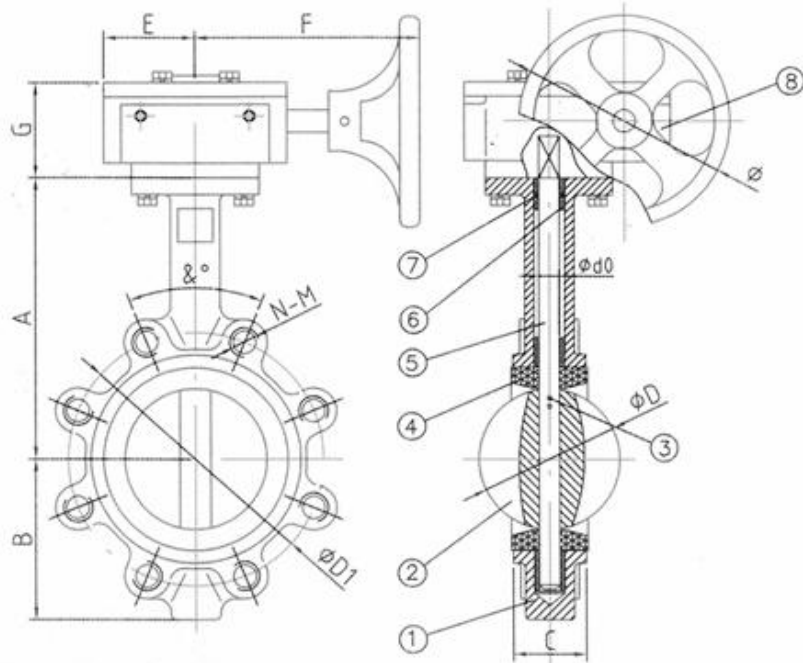


9	PIN	SS416	2	2"-5" ONLY ONE
8	LEVER	Cast iron	1	
7	INDICATOR	CARBON STEEL	1	
6	O-RING	EPDM	1	
5	BUSHING	P.T.F.E.	4	
4	STEM	SS416	1	
3	SEAT	EPDM	1	
2	DISC	AISI304	1	
1	BODY	GG25	1	
NO.		PARTS NAME	MATERIAL	QTY

TEST PRESSURE	HYDROSTATIC	SHELL	24 kg/cm <sup>2</sup>	SEAL	17.6 kg/cm <sup>2</sup>
	AIR				
STANDARD	DESIGN CODE	BS 5155			
	INSPECTION & TEST	DIN 3230 PART 3			
	END STANDARD	DIN PN16			
	FACE TO FACE	DIN 3202 K1			

2"	161	80	42	52.9	266	12.6	11	32	125	4-16	90	F05	70	50	4-7	4.5
2.5"	175	89	45.8	64.5	266	12.6	11	32	145	4-16	90	F05	70	50	4-7	5.1
3"	181	95	45.8	78.8	266	12.6	11	32	160	8-16	45	F05	70	50	4-7	5.6
4"	200	114	52	104	266	15.77	11	32	180	8-16	45	F07	90	70	4-9	9.9
5"	213	127	55	123.3	266	18.92	14	32	210	8-16	45	F07	90	70	4-9	11.8
6"	226	139	55.8	155.1	266	18.92	14	32	240	8-20	45	F07	90	70	4-9	15.1
8"	260	175	61.6	202.5	355	22.1	17	45	295	12-20	30	F10	125	102	4-12	19.7
10"	292	203	67.2	250.5	505	28.45	22	45	355	12-24	30	F10	125	102	4-12	28.3
12"	337	242	76.9	301.6	505	31.6	22	45	410	12-24	30	F10	140	102	4-12	41.5
SIZE	A	B	C	D	L0	d0	H	L	D1	N-M	&°	ISO5211	K	E	4-φd	Weight(KG)

TITLE : LEVER LUG BUTTERFLY VALVE DN50-DN300				
APPROVED		DWG NO.		REV
CHECKED				
DRAWN				
DESIGNED		SCALE		UNIT mm



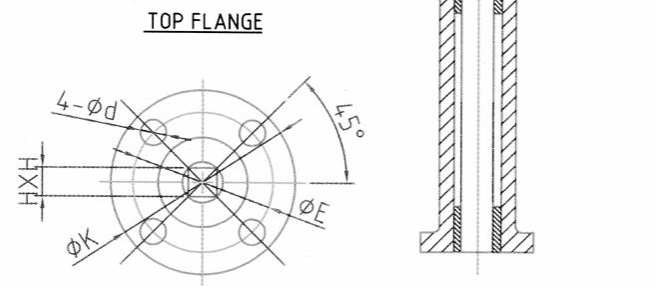
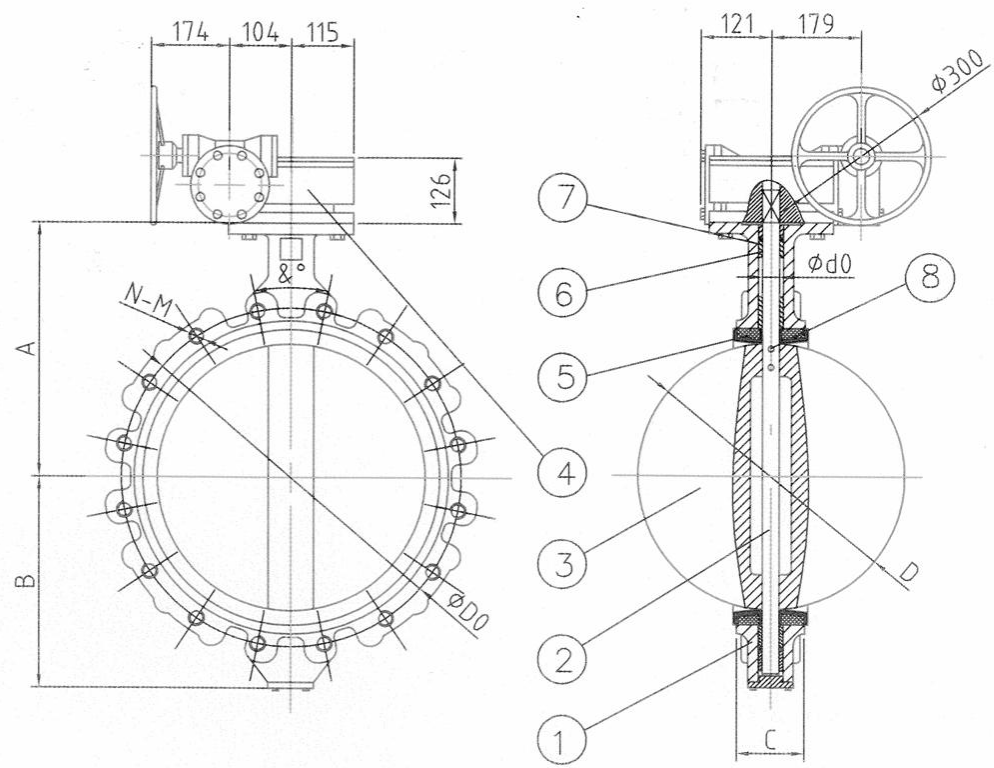
2"	75	52	153	52	45	150
2.5"	75	52	153	52	45	150
3"	75	52	153	52	45	150
4"	75	52	153	52	45	150
5"	75	52	153	52	45	150
6"	75	52	153	52	45	150
8"	86	75	250	75	63	300
10"	86	75	250	75	63	300
12"	83	81	227	81	80	300
SIZE	G	E	F	A1	B1	φ

9					
8	GEAR	CAST IRON		1	
7	O-RING	EPDM		1	
6	BUSHING	P.T.F.E.		4	
5	STEM	SS416		1	
4	SEAT	EPDM		1	
3	PIN	SS416		2	ONLY 2-5" ONE PIN
2	DISC	AISI304		1	
1	BODY	GG25		1	
NO. PARTS NAME		MATERIAL		QTY	

2"	161	80	42	52.7	12.6	11	F07	32	90	70	4-9	125	4-M16	11x11	90
2.5"	175	89	45.8	64.4	12.6	11	F07	32	90	70	4-9	145	4-M16	11x11	90
3"	181	95	45.8	74.7	12.6	11	F07	32	90	70	4-9	160	8-M16	11x11	45
4"	200	114	52	104	15.77	11	F07	32	90	70	4-9	180	8-M16	11x11	45
5"	213	127	55	123.3	18.92	14	F07	32	90	70	4-9	210	8-M16	14x14	45
6"	226	139	55.8	155.6	18.92	14	F07	32	90	70	4-9	240	8-M20	14x14	45
8"	260	175	61.6	202.5	22.1	17	F10	45	125	102	4-12	295	12-M20	17x17	30
10"	292	203	67.2	250.5	28.45	22	F10	45	125	102	4-12	355	12-M24	22x22	30
12"	337	242	76.9	301.5	31.6	24	F10	45	140	102	4-12	410	12-M20	22x22	30
SIZE	A	B	C	D	d0	H	ISO5211	L	K	E	4-φd	D1	N-M	HxH	&°

TEST PRESSURE	HYDROSTATIC	SHELL	24 kg/cm <sup>2</sup>	SEAL	17.6 kg/cm <sup>2</sup>
	AIR				
STAND-ARD	DESIGN CODE	BS5155			
	INSPECTION & TEST	DIN3230 PART 3			
	END STANDARD	DIN PN16			
	FACE TO FACE	DIN3202 K1			
TITLE :GERA LUG BUTTERFLY VALVE DN50-DN300					
APPROVED		DWG NO.		REV	
CHECKED					
DRAWN					
DESIGNED		SCALE		UNIT	mm
SIGNATURE					

PT 3



9			
8	PIN	SS416	2
7	O-RING	EPDM	1
6	BUSHING	P.T.F.E.	5
5	SEAT	EPDM	1
4	GERA	Cast iron	1
3	DISC	AISI304	1
2	STEM	SS416	1
1	BODY	GG25	1

NO.	PARTS NAME	MATERIAL	QTY
TEST PRESSURE	HYDROSTATIC	24 kg/cm <sup>2</sup>	17.6 kg/cm <sup>2</sup>
	AIR		
STAND-ARD	DESIGN CODE	BS 5155	
	INSPECTION & TEST	DIN 3230 PART 3	
	END STANDARD	DIN PN16	
	FACE TO FACE	DIN 3202 K1	

TITLE :GERA LUG BUTTERFLY VALVE DN400-DN500			
APPROVED		DWG NO.	REV
CHECKED			
DRAWN			
DESIGNED		SCALE	UNIT mm

100  
450  
500

16"	400	309	86.5	389.6	33.15	52	F14	197	140	4-18	525	16-M27	27	22.5
18"	422	328	105.6	440.5	38	52	F14	197	140	4-18	585	20-M27	27	18
20"	480	361	131.8	491.6	41.15	65	F14	197	140	4-18	650	20-M30	36	18
SIZE	A	B	C	D	d0	L	ISO5211	K	E	4-d	D1	N-M	HXH	&°